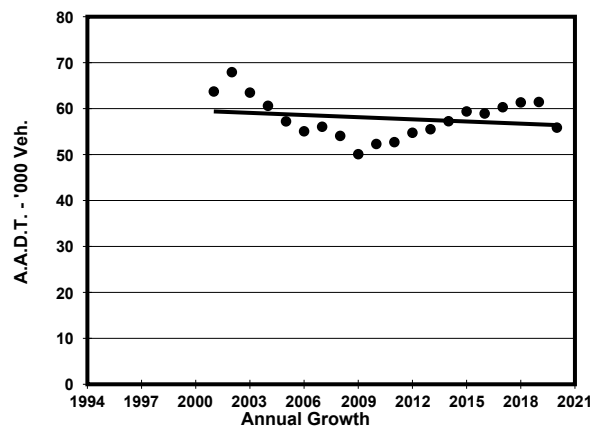
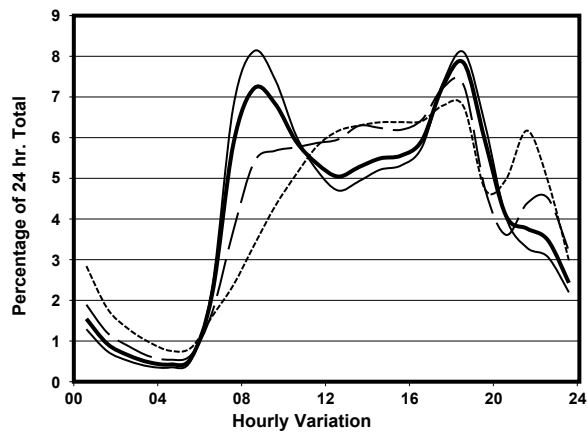
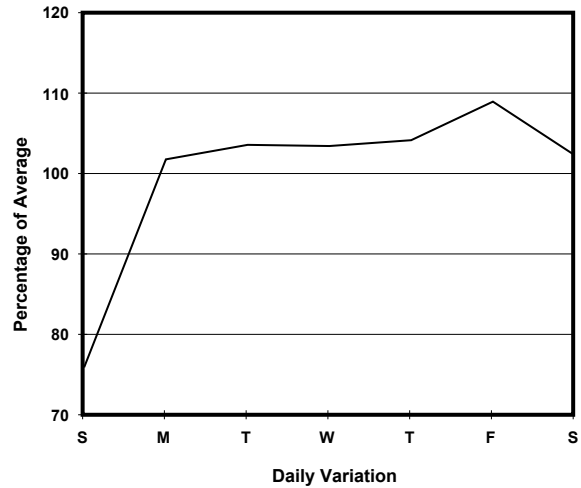
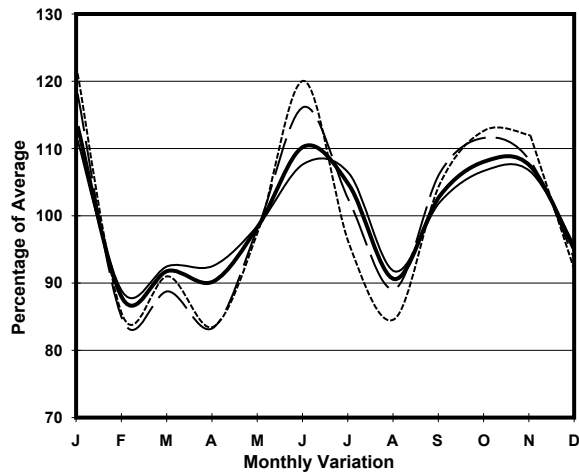


YEAR 2020
CORE STATION 5022
ROAD NETWORK MAJOR
ROAD TYPE URBAN TRUNK ROAD

LINK TATE'S CAIRN TUNNEL (from TOLL PLAZA to SOUTH PORTAL)



1. TRAFFIC FLOW VARIATION AND GROWTH



— All day — Mon.- Fri. Sat. - - - - Sun.

2. TRAFFIC CHARACTERISTICS (BY DIRECTION)

Parameter	All - Day	Mon. - Fri.	Sat.	Sun.
SOUTH BOUND				
A.A.D.T.	26810	28380	27520	20650
R 12 / 24 - %	78.6	80.5	75.6	69.2
R 16 / 24 - %	91.5	92.1	90.7	88.3
AM Peak Hour	0800-0900	0800-0900	0900-1000	0900-1000
One-way flow at AM peak hour	2240	2680	1900	1010
T - % (AM)	-	15.2	-	-
PM Peak Hour	1800-1900	1800-1900	1800-1900	1700-1800
One-way flow at PM peak hour	1940	2080	1910	1480
T - % (PM)	-	10	-	-
Prop.of commercial vehicles - 16 hr.	-	12.2	-	-
NORTH BOUND				
A.A.D.T.	29050	30630	30390	22410
R 12 / 24 - %	68.9	69.7	68.8	63.3
R 16 / 24 - %	90.1	91.2	88	85.6
AM Peak Hour	0800-0900	0800-0900	0900-1000	0900-1000
One-way flow at AM peak hour	1790	2120	1380	850
T - % (AM)	-	14	-	-
PM Peak Hour	1800-1900	1800-1900	1700-1800	1700-1800
One-way flow at PM peak hour	2430	2700	2330	1440
T - % (PM)	-	7.3	-	-
Prop.of commercial vehicles - 16 hr.	-	12.3	-	-

3. OTHER INFORMATION AND COMMENT

4. Vehicle classification and occupancy - Monday to Friday

Time		Class of vehicle									
		Motor Cycle	Private Car	Taxi	Private LB	PLB	Goods veh.		Non Fr. Bus	Fr. Bus	
							Light	M & H		SD	DD
0700-0800	Pro	4.4	63.6	9.1	1.0	0.0	10.1	3.5	2.3	0.0	5.9
	Ocp	1.1	1.4	2.1	5.8	0.0	1.5	1.2	30.0	0.0	63.3
0800-0900 Peak hour	Pro	3.7	59.3	9.3	0.2	0.0	13.0	5.8	2.3	0.0	6.4
	Ocp	1.1	1.2	2.0	2.3	0.0	1.6	1.5	21.9	0.0	53.2
0900-1000	Pro	1.9	53.8	10.9	0.6	0.0	20.3	6.8	0.8	0.0	4.9
	Ocp	1.1	1.2	2.1	3.0	0.0	1.7	1.3	10.0	0.0	38.9
1000-1100	Pro	2.6	51.7	11.9	0.2	0.0	20.4	7.4	0.5	0.0	5.3
	Ocp	1.1	1.4	2.0	1.5	0.0	1.5	1.4	1.8	0.0	31.8
1100-1200	Pro	1.7	50.7	9.9	0.3	0.0	24.4	5.7	1.0	0.0	6.4
	Ocp	1.0	1.3	2.2	1.5	0.0	1.5	1.4	6.9	0.0	28.1
1200-1300	Pro	1.6	56.8	10.0	0.1	0.0	17.3	7.0	1.0	0.0	6.1
	Ocp	1.2	1.3	2.0	1.0	0.0	1.5	1.4	12.9	0.0	29.3
1300-1400	Pro	2.3	56.6	10.1	1.4	0.0	17.8	4.8	0.9	0.0	6.1
	Ocp	1.2	1.3	2.1	2.8	0.0	1.5	1.3	5.5	0.0	34.3
1400-1500	Pro	1.6	53.3	10.2	0.8	0.0	17.8	10.8	0.5	0.0	5.0
	Ocp	1.1	1.4	2.3	2.6	0.0	1.6	1.4	3.0	0.0	28.5
1500-1600	Pro	2.3	54.1	8.6	1.2	0.0	20.1	7.2	0.9	0.0	5.6
	Ocp	1.1	1.4	2.1	4.5	0.0	1.6	1.3	13.9	0.0	30.2
1600-1700	Pro	2.1	53.5	8.0	0.3	0.0	24.5	5.2	0.5	0.0	5.8
	Ocp	1.1	1.4	1.9	1.3	0.0	1.5	1.2	11.3	0.0	33.7
1700-1800	Pro	6.7	60.8	6.1	0.1	0.0	15.9	3.4	0.7	0.0	6.3
	Ocp	1.0	1.4	2.0	1.0	0.0	1.4	1.2	26.9	0.0	51.5
1800-1900	Pro	3.6	72.2	6.8	0.2	0.0	8.6	1.7	1.0	0.0	5.9
	Ocp	1.0	1.3	2.2	2.3	0.0	1.5	1.3	25.9	0.0	62.2
1900-2000	Pro	2.2	73.2	6.5	0.1	0.0	7.6	1.1	1.0	0.0	8.3
	Ocp	1.3	1.3	2.1	1.0	0.0	1.6	1.0	18.0	0.0	47.7
2000-2100	Pro	4.4	66.8	11.4	0.0	0.0	7.2	0.7	0.8	0.0	8.8
	Ocp	1.2	1.3	2.1	0.0	0.0	1.5	1.5	14.2	0.0	38.5
2100-2200	Pro	3.8	61.8	17.3	0.2	0.0	4.4	1.8	0.9	0.0	9.7
	Ocp	1.2	1.3	2.1	2.0	0.0	1.6	1.3	15.3	0.0	38.1
2200-2300	Pro	4.3	65.8	14.6	0.0	0.0	4.3	1.8	0.6	0.0	8.6
	Ocp	1.1	1.4	2.1	0.0	0.0	1.5	1.2	5.3	0.0	34.0
16 hours	Pro	3.1	59.8	9.5	0.5	0.0	14.9	4.8	1.1	0.0	6.3
	Ocp	1.1	1.3	2.1	3.3	0.0	1.5	1.4	18.6	0.0	42.6

Legend: Pro. Proportion of vehicles in % (Sum may not add up to 100% due to figure rounding)*

Ocp. Average occupancy of vehicles including both driver and passengers*

M&H Medium and Heavy

* All traffic data are collected from combined bounds